



Authorized Distributor:
INNOVATIVE FOOD EQUIPMENT
 4/8 OLEANDER DRIVE, SOUTH MORANG 3752 VICTORIA()
 TEL./FAX. 03 9436 4488 / 03 9436 4066
 E-mail:paul@ifea.com.au

Sirman Pasta Machines , model Sansone :



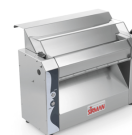
- Powerful dough roller available in 3 sizes
- Vertical construction that reduces the space taken up on the working counter and facilitates gripping of the dough at outfeed
- Built out of stainless steel
- Ventilated motor in non-stop operating mode with dual reduction
- Coaxial reduction gear+ belt transmission
- Adjustable dough thickness 0÷10 mm
- Infeed area protected with safety microswitch
- Wide chute for dough infeed
- Application of optional cutter available in three sizes, mm 2 - 6 – 12.
- Perfect also to laminate pizza



Sansone 32

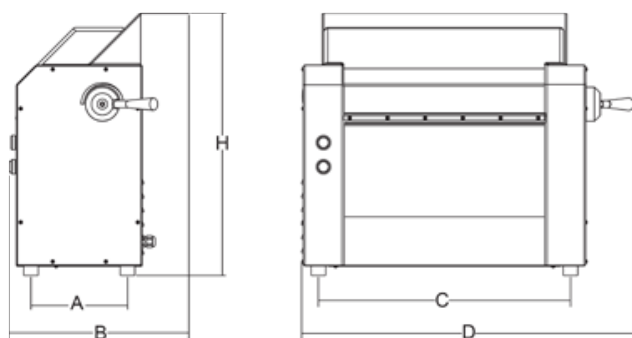


Sansone 42 with optional pasta cutter



Sansone 52

Data sheet



Technical data

Model	Sansone 32	Sansone 42	Sansone 52
Power	Hp 0,5	Hp 0,5	Hp 0,5
Power source	230V/50Hz	230V/50Hz	230V/50Hz
Roller dimensions	mm ø 60x320	mm ø 60x420	mm ø 60x520
A	mm 200	mm 200	mm 200
B	mm 375	mm 375	mm 375
C	mm 422	mm 522	mm 622
D	mm 600	mm 700	mm 800
H	mm 545	mm 545	mm 545
Net weight	kg 52	kg 59	kg 66
Shipping	mm 760x640x800	mm 760x640x800	mm 760x640x800
Gross weight	kg 65	kg 72	kg 79