



Authorized Distributor:  
**INNOVATIVE FOOD EQUIPMENT**  
 4/8 OLEANDER DRIVE, SOUTH MORANG 3752 VICTORIA(A)  
 TEL./FAX. 03 9436 4488 / 03 9436 4066  
 E-mail:paul@ifea.com.au



Sirman Slicers , model Palladio 300 :

- Rounded design, no sharp edges and visible screws.
- Chrome plated and ground slide rod.
- Lapped cast iron slide rod bushing.
- Vulcanized rubber stops on carriage.
- Removable support cover for thickness gauge plate.
- Stainless steel slice deflector with bayonet fitting.
- Stainless steel screws and fittings.
- Enclosed and sealed belt pulley.
- 49,5 mm distance between blade and motor.
- Bottom cover.
- Changeover electronic circuit 110-220-380 V single and three phase.
- Built in sharpening tool with bottom protection.
- Standard blade removal tool.
- 35° blade inclination
- Plastic knob.
- Plastic pushbuttons with IP67 protection rating.

**Optional Stonehenge:**

- Cast aluminum alloy with special ceramic-teflon coating treatment
- Ideal for sticky products processing
- Excellent product gliding and easy to clean
- Highly resistant to acids and sanitizing chemicals
- Removable parts are dishwasher safe
- Aluminum-gray finish colour.

**Available versions:**

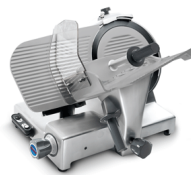
- **Stonehenge:** table, blade cover, carriage, end weight
- **Stonehenge Plus:** base, table, knife rim guard, blade cover, carriage, end weight, sharpener housing



More space between blade and body machine

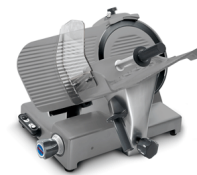


Large hopper



Stonehenge

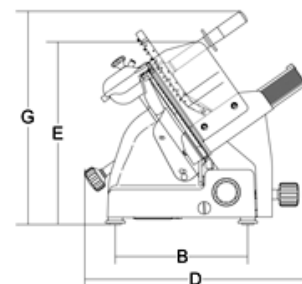
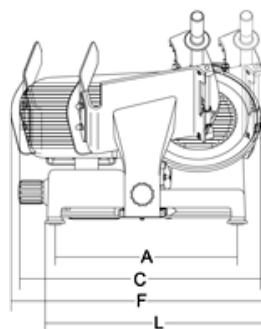
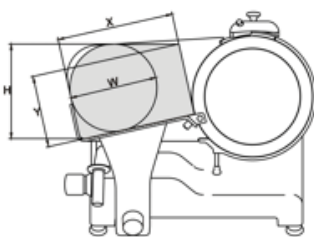
Palladio



Stonehenge Plus

Palladio

Data sheet



Technical data

Model	PALLADIO 300
∅ Blade	mm 300 - inch. 12
Motor	watt 275 - Hp 0,37
Cut thickness	mm 23
Run of carriage	mm 310
Hopper	mm 305x270
A	mm 465
B	mm 340
C	mm 615
D	mm 547
E	mm 465

F	mm 710
G	mm 545
L	mm 625
X	mm 270
Y	mm 190
H	mm 240
W	mm 220
Net weight	kg 35
Shipping	mm 760x640x700
Gross weight	kg 44